




ProImage **NW** RIP

Always available page views

Choice of RIP engines

Outstanding Automation capabilities



ProImage NW RIP – a RIP with a difference... ProImage RIPs are based on powerful RIP engines with all the added benefits provided by the NewSWay platform.

ProImage has licensed the Harlequin® RIP engine to bring you the classic RIP for newspaper applications, operating under the NewSWay graphical user interface.

In addition, ProImage has embedded the EagleRIP from Founder Group Corporation of China to its NewSWay platform. For decades the exceptionally fast EagleRIP has been the market leader in the Chinese speaking world and now it is also available with Latin fonts as a ProImage RIP.

**We make
complex
publishing
simple.**

ProImage RIPs are fully compatible with both Postscript® and Adobe Portable Document Format (PDF).
Implementation of either or both of these

RIPs provide the publisher with a choice of features such as InRIP trapping, more than 4,000 shades of grey, powerful media savings features and many more. Apart from

We make
complex
publishing
simple.



For more information contact any of our subsidiaries or visit our web site: www.proimage.co.il

ProImage Ltd.

North Industrial Park,
Or-Akiva P.O.Box 55,
Israel, 30650
Tel: +972-4-6264122
Fax: +972-4-6264123
E-mail: pii@proimage.co.il

ProImage America, Inc.

212 Carnegie Center
Suite 206,
Princeton, NJ 08540
USA
Tel: +1-609-844-7576
Fax: +1-609-895-2666
E-mail: pia@proimage.co.il

ProImage Europe Ltd.

Rowlandson House
289-293 Ballards Lane, Fichley
London N12 8NP
United Kingdom
Tel: +44 (0) 84545 88600
Fax: +44 (0) 84545 88601
E-mail: pie@proimage.co.il

Postscript and PDF, a large range of additional input files supported include TIFF/IT-P1(optional), TIFF6, DCS-2 and EPS.

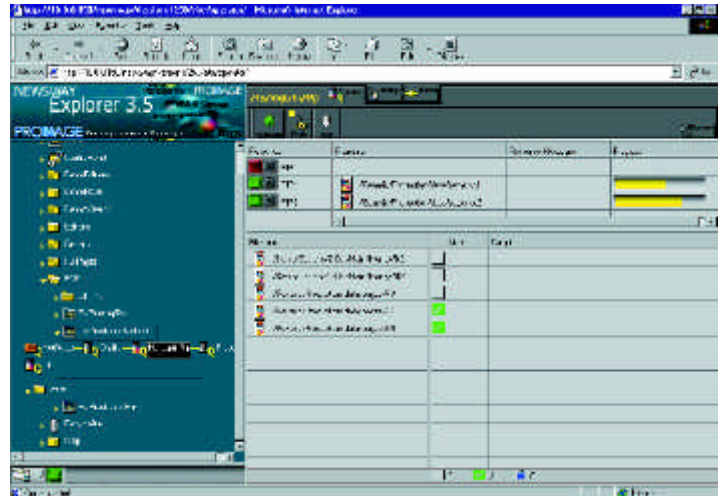
More efficient output with soft viewing

Web browser based NewsWay's Graphical User Interface may be used to control the RIP from any client within the network. NewsWay will automatically generate previews of all RIPPed files allowing viewing of any processed file without waiting.

The load balancing and clustering features within NewsWay also

make it easy to build "RIP Farms" where a number of RIPs running on different hardware may be controlled and managed from a single GUI, to then be used in the most efficient way. NewsWay's Load Balancing feature allows sharing of RIPs through a single input queue as well as load sharing of imaging devices.

The NewsWay imaging Server at the output stage, interfaces to most known imaging devices from popular ECRM and AGFA imagesetters to a large range of CTP devices.



a large number of RIPs can be managed from one screen

The RIPs' properties are also easily managed by "naming rules" making it very simple to dynamically pass parameters to the RIP. For example decision mechanisms to effect properties such as RIPping in monochrome instead of CMYK can easily be applied within a NewsWay workflow.